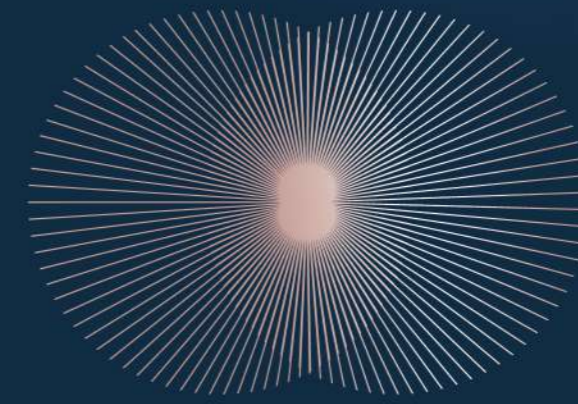


ANTARA  
GENTING HIGHLANDS

[WWW.ANTARAGENTING.COM](http://WWW.ANTARAGENTING.COM)



AIR  
RESORT SUITES

Inspired by water which serves as the basis of life on our planet,  
we invite you to a home where you can wash away the stresses  
and struggles of yesterday and look forward to a joyful tomorrow.

Here at Genting Antara Air.

AIR MEANS  
WATER.  
THE ELEMENT  
WHICH RIPPLES  
AND CAUSES  
WAVES THAT  
EVENTUALLY  
SHAPES THE  
WORLD WE  
KNOW TODAY.

AIR MEANS  
WATER.  
THE ELEMENT  
WHICH RIPPLES  
AND CAUSES  
WAVES THAT  
EVENTUALLY  
SHAPES THE  
WORLD WE  
KNOW TODAY.

Inspired by water which serves as the basis of life on our planet,  
we invite you to a home where you can wash away the stresses  
and struggles of yesterday and look forward to a joyful tomorrow.

Here at Genting Antara Air.





ANTARA

GENTING HIGHLANDS

LINK BRIDGE

AWANA SKYWAY  
CHIN SWEE STATION

CHIN SWEE CAVES TEMPLE

GENTING HIGHLANDS  
PREMIUM OUTLET

# A SANCTUARY THAT SITS BETWEEN HEAVEN AND EARTH

Strategically located at the peak of the mountain, Antara Genting offers quick accessibility to Genting Highlands through our covered link bridge that connects nature, convenience and recreation to your doorstep. Spanning a total of 1,209 meters and equipped with escalators from end to end, our link bridge indulges your senses with the cooling breeze and stunning view of the mountain range, giving you the embodiment of peak living.

With Antara Genting placed at the centre, one end of the link bridge connects you to Awana Skyway (Chin Swee Station) while the other end brings you straight towards Resorts World Genting where all the actions take place.

With its proximity to such wide-ranging leisure and entertainment facilities, including Genting Premium Outlets and Gohtong Jaya F&B outlets, Antara Genting is truly the go-to premier integrated resort destination for both tourists and locals alike.

# LIKE A RIVER FLOWING UPWARDS

Built around the natural lush green rainforest, Air Resort Suites offers you a holistic experience for ultimate relaxation with its connectedness with nature. Take a warm bath while taking in the majestic mountain range and rainforest view, Air Resort Suites is your ideal home where you can deeply relax amidst the calm of nature. And when it is time to live it up, you can cross over using our link bridge that connects wonder and excitement to your home.

**B** Bus Station

**P** Car Park

① Awana Skyway Station



② Genting Skyway



③ Antara Link Bridge (Walking Distance)





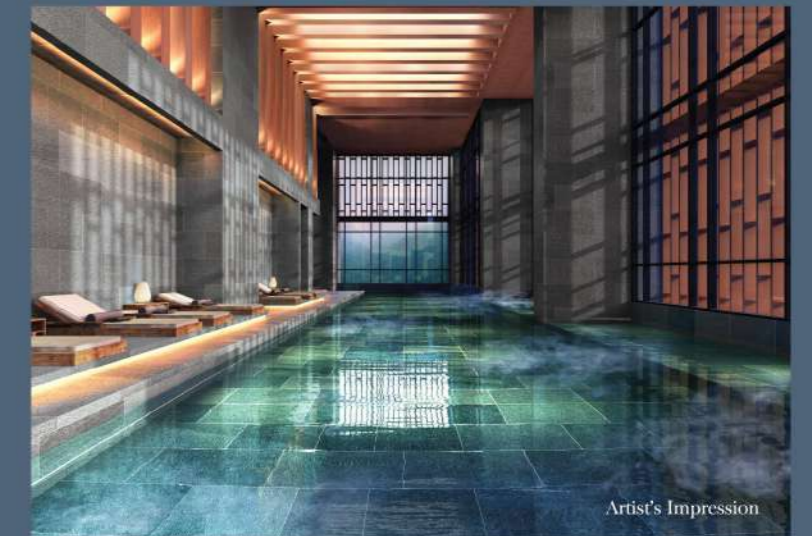
AIR  
MEANS  
WATER

Meaning water in the Malay language, the Air in Air Resort Suites pays tribute to the clean and ever flowing water that sustains our natural rainforests and creates a misty atmosphere to our surroundings in Genting Highlands.



# SPRING TO LIFE

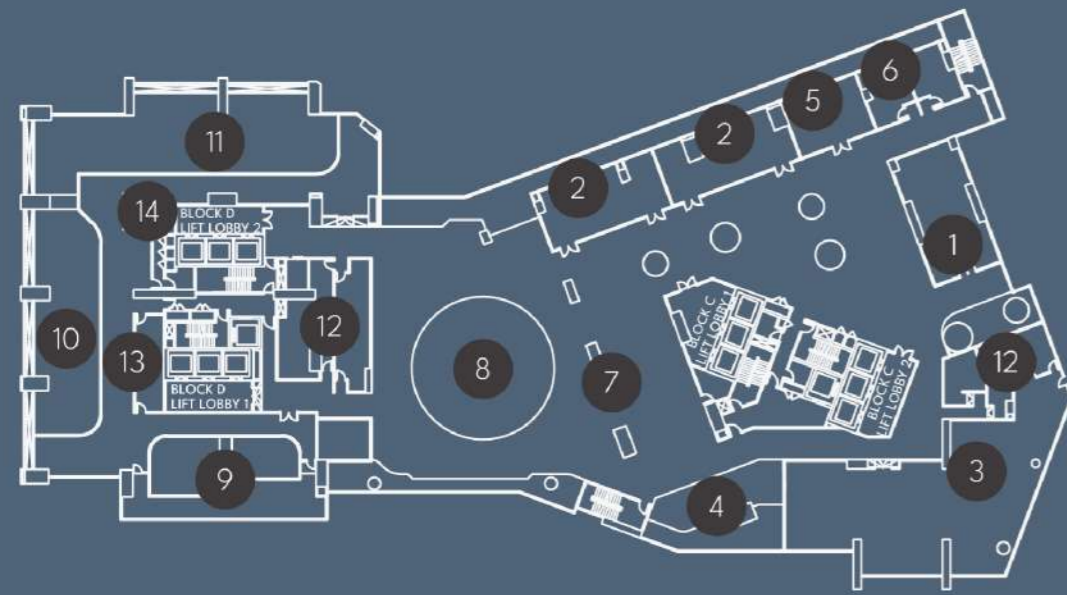
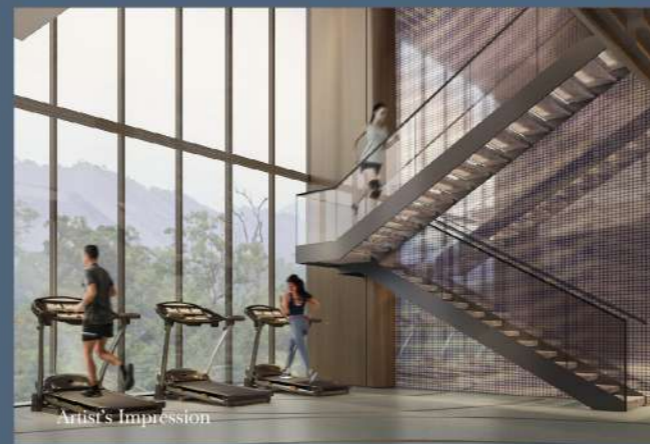
Inspired by the concept of an overflowing stream bringing forth abundance and refreshment to the land surrounding it, Air Resort Suites features a wide river of water and nature themed facilities. Lose yourself while admiring our waterfall, light sculpture and water feature. Or push your body to its limits on our climbing wall, trampoline zone and gymnasium. There's simply so much to see and do at Air Resort Suites.



## LEVEL 1

- |                    |                          |                                    |
|--------------------|--------------------------|------------------------------------|
| 1. Terrace Planter | 7. Open Deck             | 13. Gymnasium                      |
| 2. Playground      | 8. BBQ Pit               | 14. Trampolin Zone                 |
| 3. Climbing Wall   | 9. Golf Simulator Room   | 15. Bowling Alley                  |
| 4. Water Feature   | 10. Cigar Room           | 16. Washroom / OKU<br>Toilet (M/F) |
| 5. Seating Area    | 11. Pool & Dart Room     |                                    |
| 6. Light Sculpture | 12. Indoor Kids Playroom |                                    |





## LEVEL 2

- 1. Arcade Room
- 2. Function Room
- 3. Yoga & Ballet Studio
- 4. Yoga Deck
- 5. Management Office
- 6. Surau (M/F)
- 7. Resting Deck
- 8. Water Feature
- 9. Season Bath / Jacuzzi
- 10. Fun Pool
- 11. Lap Pool
- 12. Washroom / OKU Toilet (M/F)
- 13. Sauna (M/F)
- 14. Pool Shower



## LEVEL 3

- 1. AV Room
- 2. Co-working Space
- 3. Resting Pod
- 4. Water Walk
- 5. Water Feature
- 6. BBQ Pit
- 7. Resting Zone
- 8. Secret Garden
- 9. Washroom / OKU Toilet (M/F)

# SPLASHES OF JOY AND DELIGHT

Every year, millions of Malaysians and tourists make their way to Genting Highlands just to enjoy the cooling atmosphere and breathtaking scenery that we call home.



Here in Air Resort Suites, we want to take that one step further by encapsulating you in uniquely themed nests and facilities that marry fun with entertainment and relaxation, so that your thoughts can flow smoothly like a spring.



# WHERE DREAMS AND MEMORIES ARE MADE

And after washing yourself from yesterday's worries, head on downstairs as Antara Genting is home to a wide range of retail outlet that brings you excitement, pleasure and simple convenience with just one elevator ride away. Whet your appetite with the exclusive restaurants and cuisines, fill your sense with exhilarating experiences or just shop around to pass the time. There's simply something for everyone and you'll always be thirsting for more tomorrow.



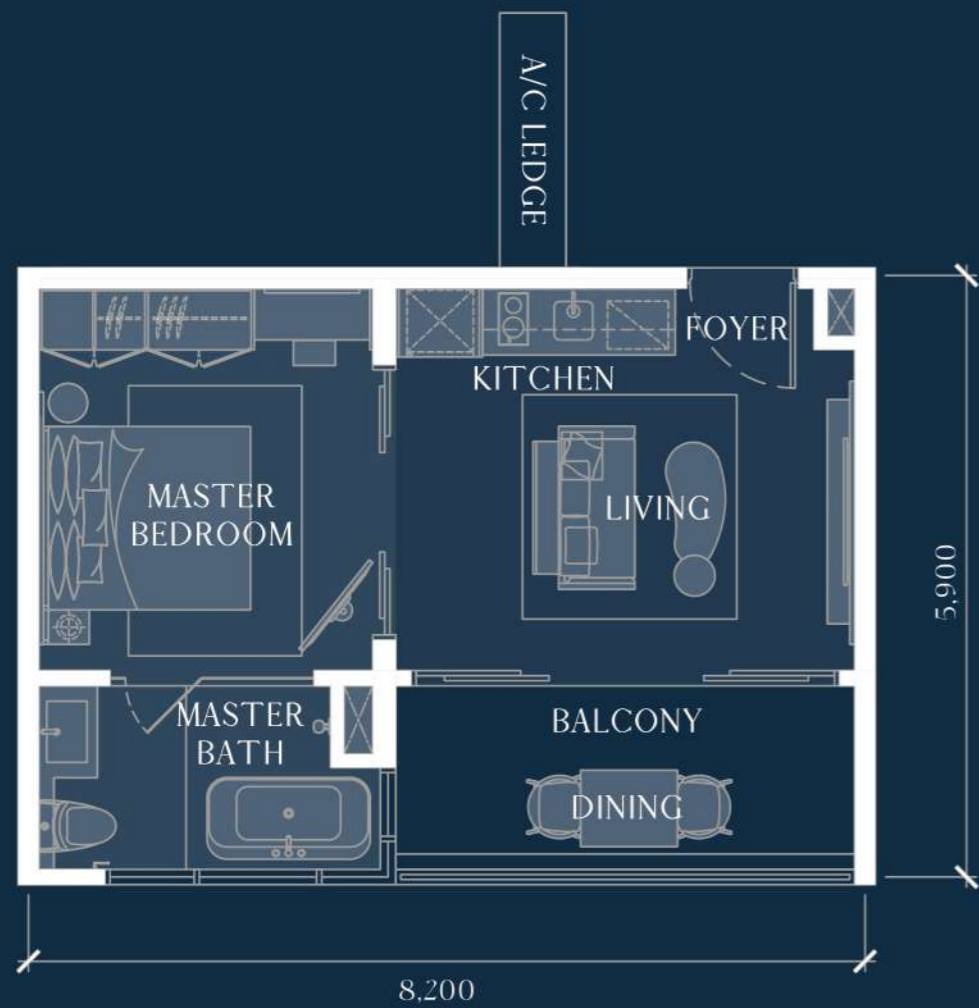
# BLOCK C TYPE AA

520 sqft | 48.3 sqm  
 1 Bedroom, 1 Bathroom  
 AC Ledge 18 sqft | 1.7 sqm



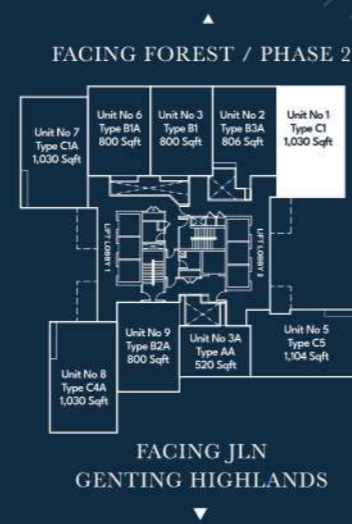
# BLOCK C TYPE B1

800 sqft | 74.3 sqm  
 2 Bedrooms, 2 Bathrooms  
 AC Ledge 23 sqft | 2.1 sqm



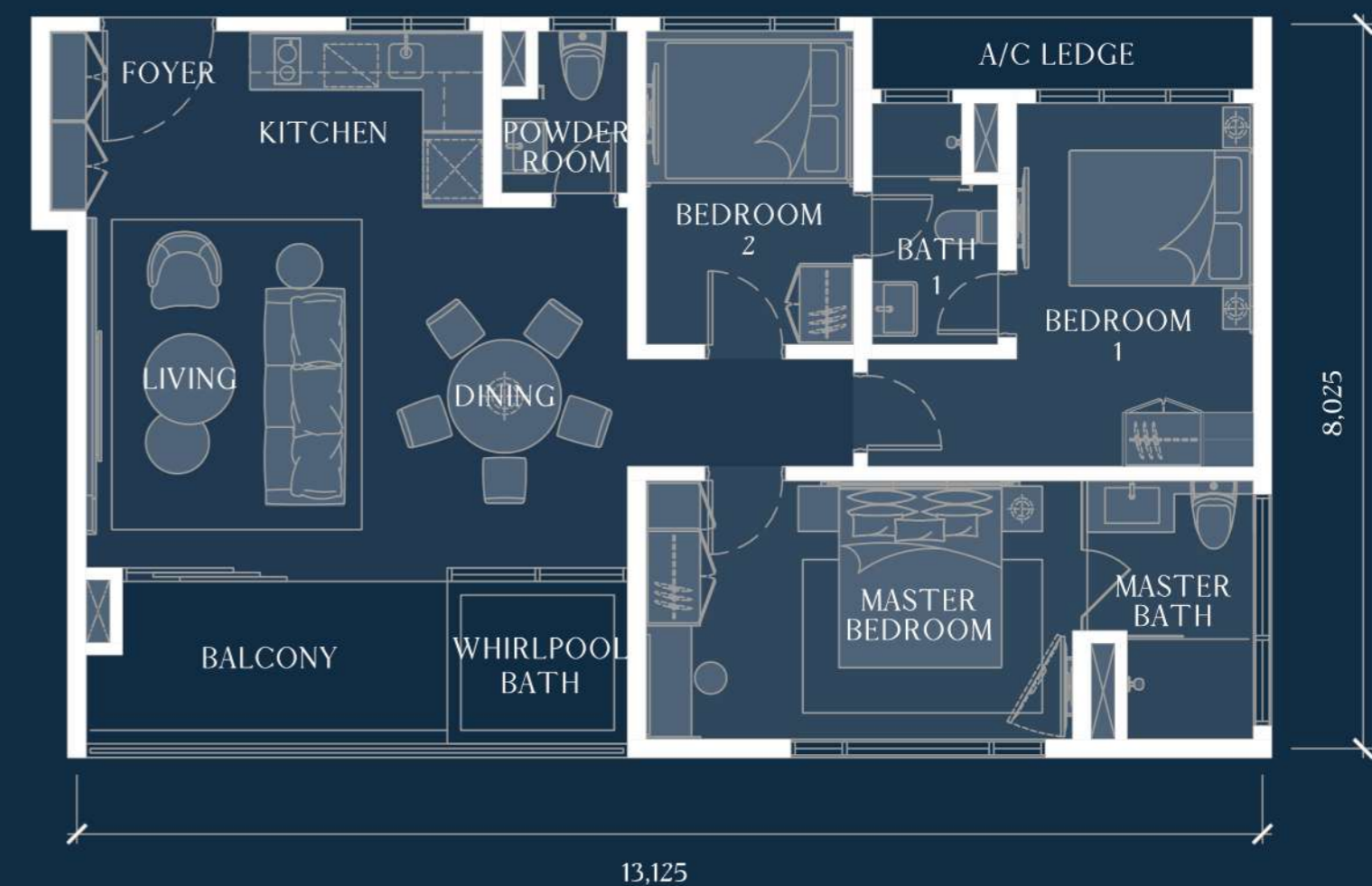
# BLOCK C TYPE C1

1,030 sqft | 95.7 sqm  
 3 Bedrooms, 2 Bathrooms,  
 1 Powder Room,  
 Private Whirl Pool Bath  
 AC Ledge 37 sqft | 3.4 sqm



# BLOCK C TYPE C5

1,104 sqft | 102.6 sqm  
 3 Bedrooms, 2 Bathrooms,  
 1 Powder Room,  
 Private Whirl Pool Bath  
 AC Ledge 38 sqft | 3.5 sqm



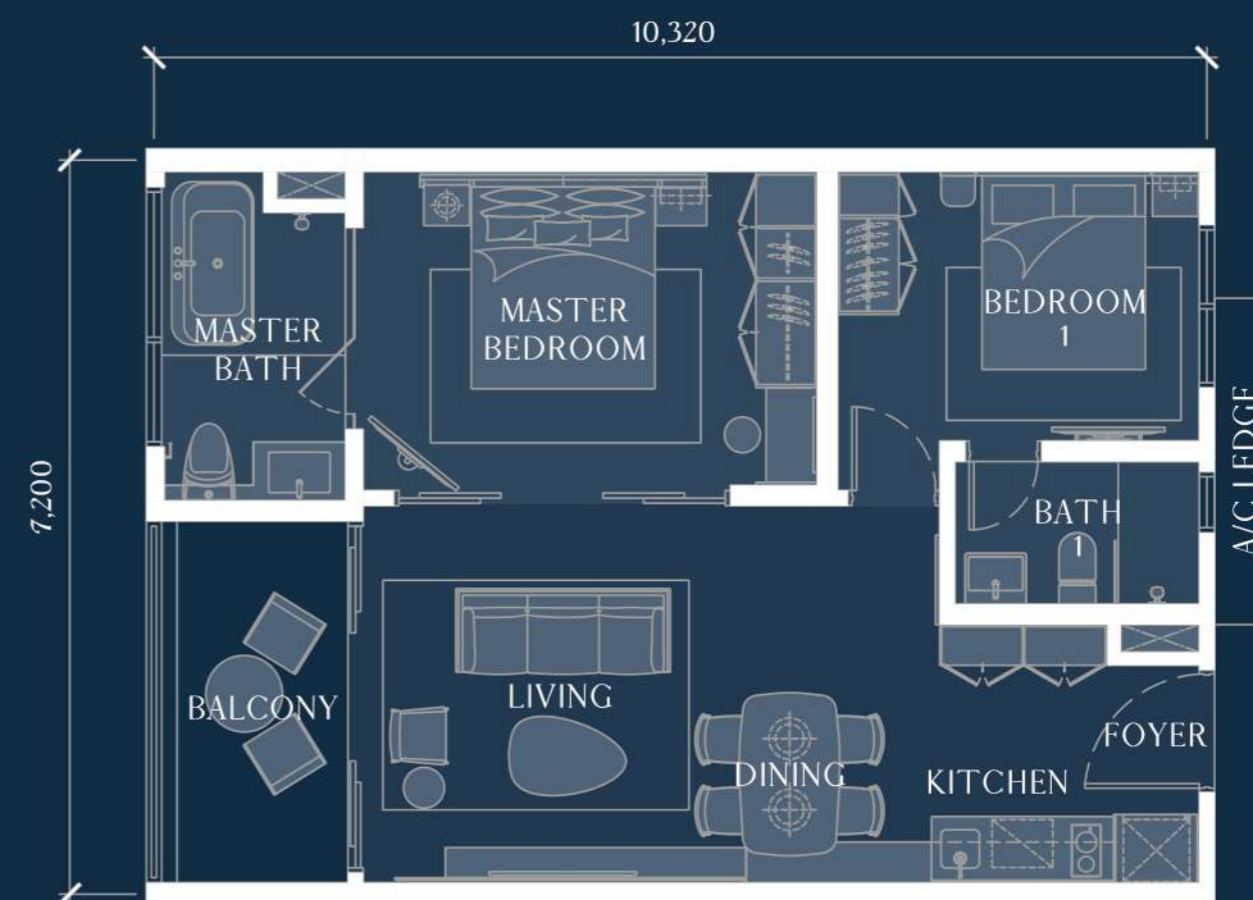
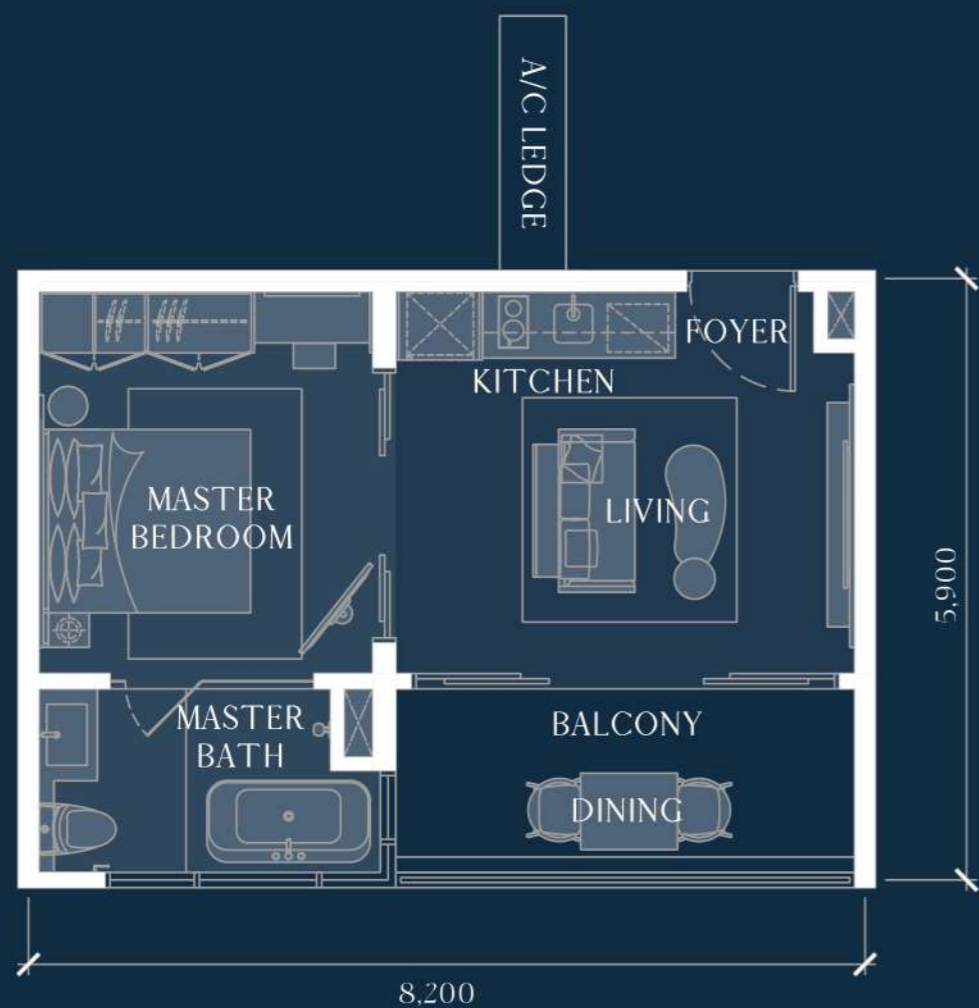
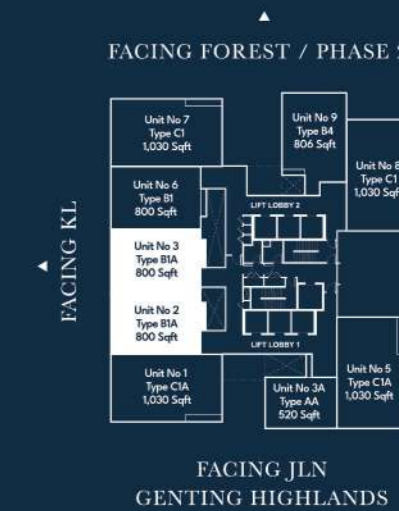
# BLOCK D TYPE AA

520 sqft | 48.3 sqm  
1 Bedroom, 1 Bathroom  
AC Ledge 18 sqft | 1.7 sqm



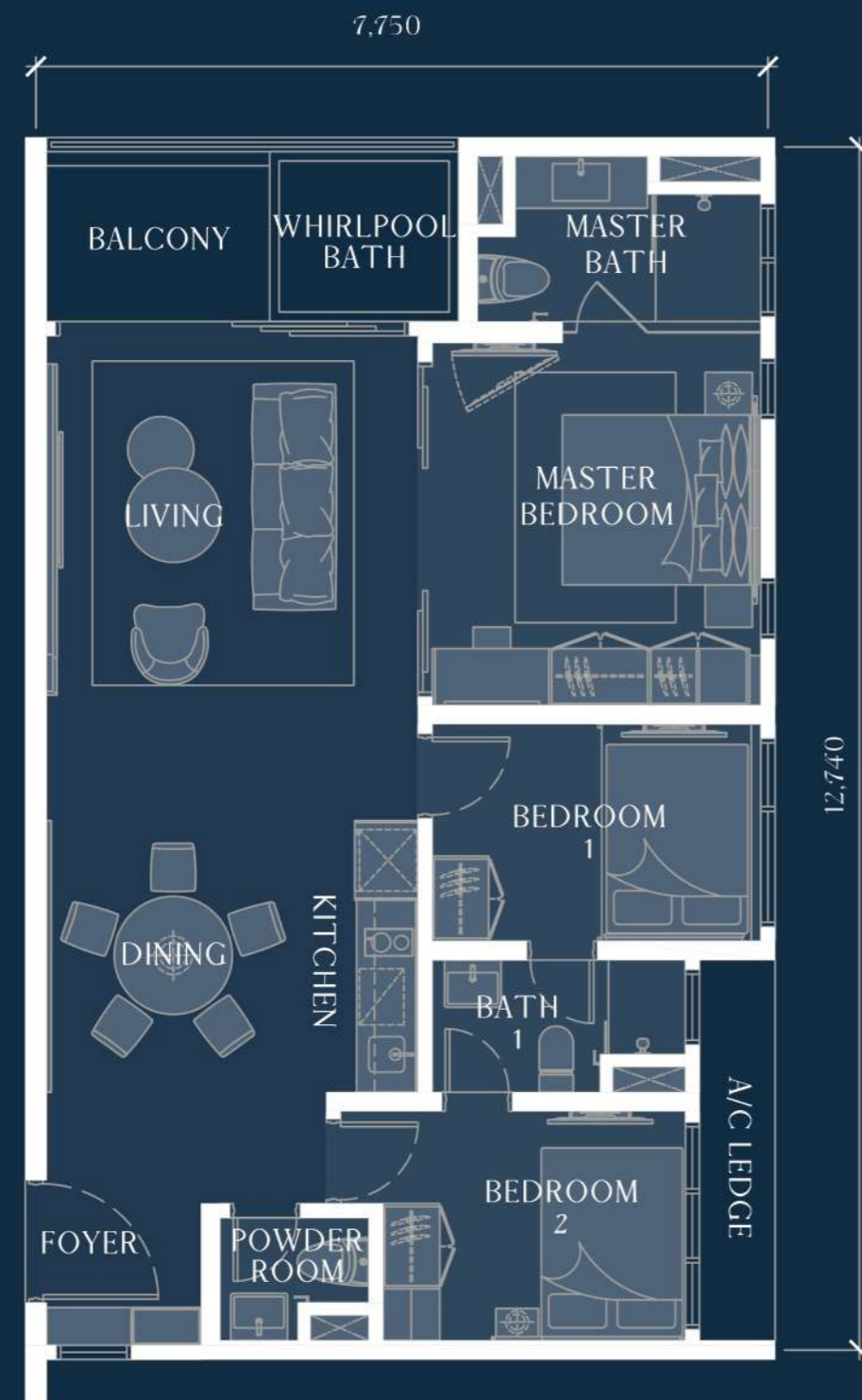
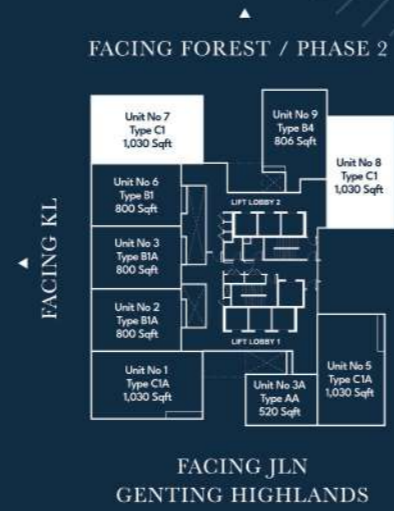
# BLOCK D TYPE B1A

800 sqft | 74.3 sqm  
2 Bedrooms, 2 Bathrooms  
AC Ledge 23 sqft | 2.1 sqm



# BLOCK D TYPE C1

1,030 sqft | 95.7 sqm  
 3 Bedrooms, 2 Bathrooms,  
 1 Powder Room,  
 Private Whirl Pool Bath  
 AC Ledge 37 sqft | 3.4 sqm



# SPECIFICATIONS

## STRUCTURE

Reinforced Concrete Framework / Shear Wall

## WALL

Reinforced Concrete Wall / Brick Wall

## ROOF

Reinforced Concrete Flat Roof  
 / Metal Deck Roof if applicable

## CEILING

Skim Coat & Paint / Ceiling Board

## FLOOR FINISHES

Master Bedroom / Bedroom 1 & 2 : Tiles  
 Living / Kitchen / Dining / Foyer : Tiles  
 Master Bath / Bath 1 / Powder Room : Tiles  
 Balcony / Terrace : Tiles  
 Air-cond Ledge : Cement Screed  
 Open Terrace : Tiles  
 TOWER C : AA-G1, B1-G, B1A-G, B3A-G, C1-G2, C1A-G2, C4A-G, C5-G  
 TOWER D : AA-G2, B4-G, C1-G1, C1-G3, C1A-G1, C1A-G2)

## SANITARY WARES & FITTINGS

Selected Quality Sanitary Wares and Fittings

NOTE : All items mentioned above are subject to variation, modification and substitution as may be recommend by Architects and/or the relevant approving Authorities. Built-up, layout plan and specifications are subject to change.

## WALL FINISHES

External Wall : Plaster & Paint  
 Internal Wall : Skim Coat & Paint / Plaster & Paint  
 Bathroom : Tiles Up to Ceiling Level

## DOORS

Main Entrance : Fire Rated Door  
 Master Bedroom : Timber Sliding Door  
 Master Bath : Glass Door  
 Bedroom : Timber Flush Door  
 Bathroom : Timber Flush Door  
 Balcony / Terrace : Aluminium Frame Sliding Glass Door

## WINDOWS

Aluminium Frame Window

## IRONMONGERIES

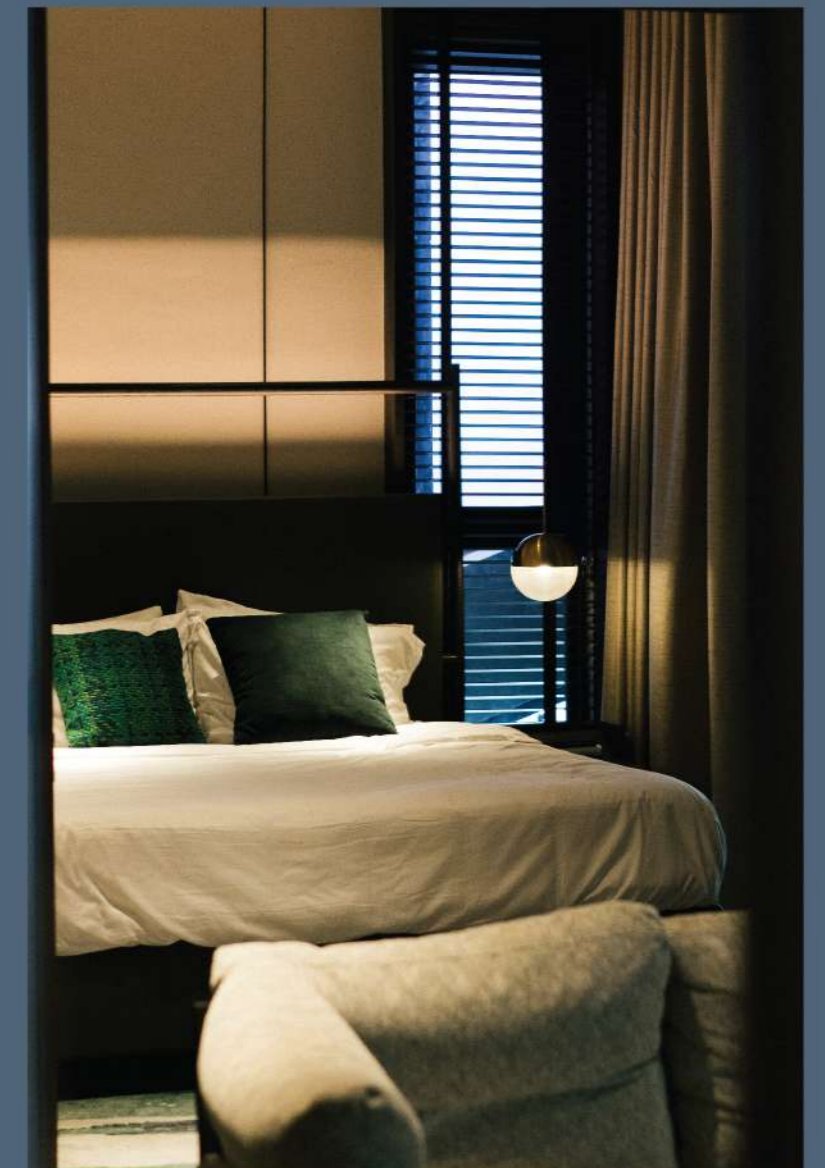
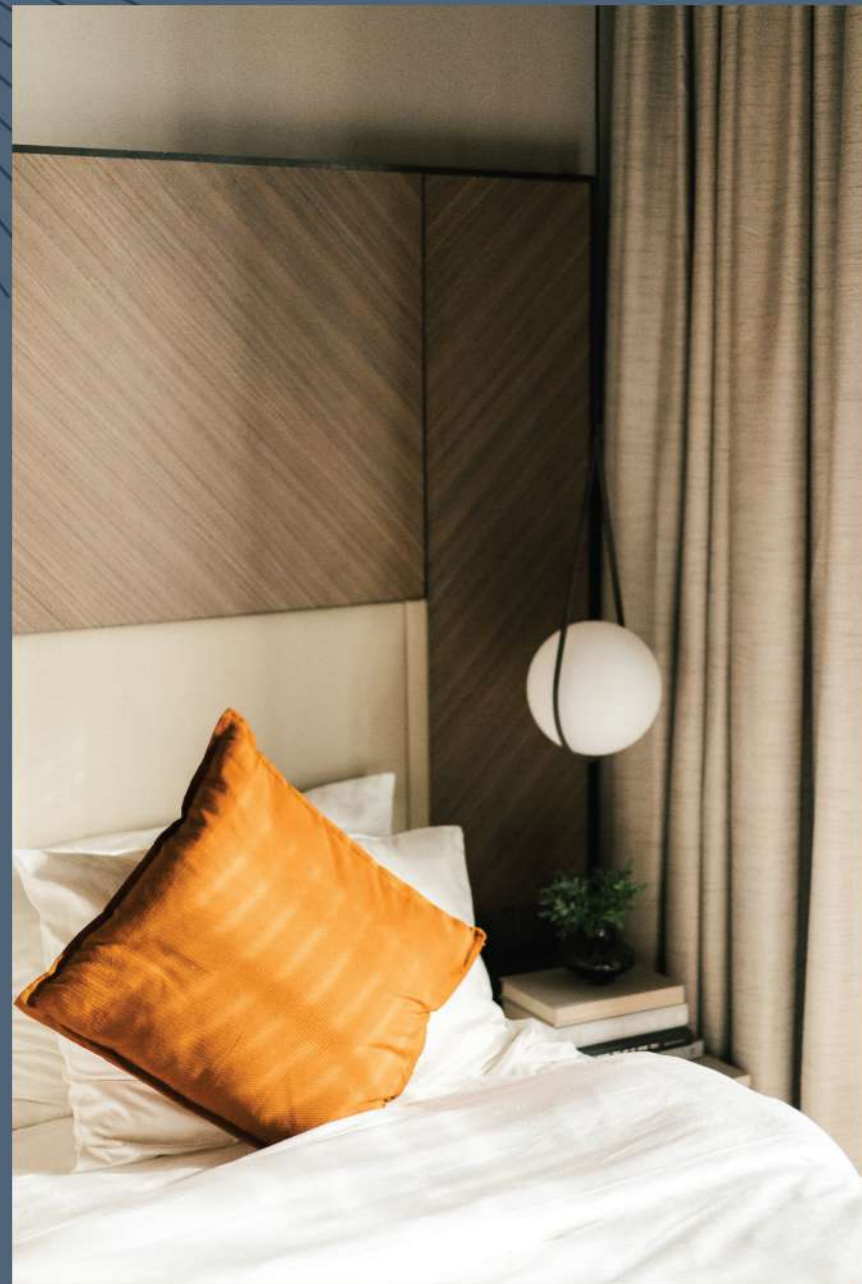
Quality Locksets

## ELECTRICAL INSTALLATION

Adequate Electrical Points

# THE ONLY THING TO BRING IS YOU

On earth, all living beings are sustained and supported by water, and the abundance of life on this planet is only equal to the amount of water there is. Thankfully, water is plentiful and in the same way, so are the furnishings in every unit of Air Resort Suites.



Here, you will not need to pack much or prepare for anything as our fully furnished rooms have everything you need and more, right down to individual cutlery for your home dining. All you need to bring is yourself.

IF THERE IS  
MAGIC ON  
THIS PLANET,  
IT IS CONTAINED  
IN WATER.  
ONE THAT  
WE HERE

Associate / Developer: **CALLAIR.**  
ASET KAYAMAS SDN BHD, Registration No: 20101001289 (B) 942 JV  
Lot 335-45, Jalan Klang Lama, 58100 Kuala Lumpur  
T: +603-7989 9888 E: +603-7989 9888 E: info@asetkayamas.com

ANTARA @ GENTING HIGHLANDS - Developer's License No.: 13811-3/12-2023/0938(L) - Validity Period: 18/12/21-17/12/2023 - Expected of Completion: 17 JUNE 2026 - Approval Authority: Majlis Perbandaran Bentong - Building Plan Approval No.: MPBTG/JKB/GH/4/15/2020 - Sales Permit No.: 13811-3/12-2023/0938(P) - Validity Period: 18/12/21-17/12/2023 - Tenure of Land: Freehold - Restriction-in-Interest: NIL - Encumbrances: NIL - Type of Residential: Service Apartment - Total No. of Units: 1,086 units (Type A/AA - 520 sqft, Type AA-G1 - 674sqft, Type A-G2-789sqft, Type B1/B1A/B2/B3/B3A- 800sqft, Type B1-G/B1A-G-1,071sqft, Type B2-G-1,125sqft, Type B3A-G-1,079sqft, Type C1/C1A/C4 - 1,030sqft, Type C1-G1 -1,173sqft, Type C2-G2-1,170sqft, Type C3/C3A- 1,066sqft, Type C4-G- 1,425sqft, Type C5-1,040sqft, Type C5-G-1,349sqft) - No. of Unit: Block B: 356 units, Block C: 356 units, Block D: 374 units - No. of Storey: Block B: 44 storey, Block C:44 storey, Block D: 46 storey - Selling Price: Block B (min: RM 1,081,000 max : RM 2,147,000), Block C (min: RM 1,081,000 max : RM 2,098,000), Block D (min: RM 1,065,000 max : RM1,931,000)- Developed by : ASET KAYAMAS SDN BHD. THIS ADVERTISEMENT HAS BEEN APPROVED BY THE NATIONAL HOUSING DEPARTMENT

All information contained herein including the specifications, plans, measurements and illustration are subject to amendments without notification as maybe required by the authorities or the developer's consultants and are not intended to form and cannot form part of an offer or contract. All measurement are approximate. All pictures and illustrations are artist's impression only.

## THE DEVELOPER



Aset Kayamas Group of Companies was established by Tan Sri Datuk Chai Kin Kong in 2011 with its primary focus to deliver comfortable homes with quality and affordability. Aset Kayamas' expanding portfolio covers luxury residential projects such as AXON Bukit Bintang, Parkhill in Bukit Jalil, The Henge in Kepong, The Holmes in Bandar Tun Razak and of course, Antara Genting Highlands. The company is also working on several affordable home projects across the Klang Valley in collaboration with local governmental bodies under the Perumahan Penjawat Awam 1Malaysia (PPA1M) and Residensi Wilayah schemes.

The strategic locations and accessibility of all Aset Kayamas projects are matched by its efforts to provide the best amenities and facilities within the developments – the very key aspects that have contributed to the continued success of its properties among investors and buyers.



# THE DEVELOPER IF THERE IS



Aset Kayamas Group of Companies was established by Tan Sri Datuk Chai Kin Kong in 2011 with its primary focus to deliver comfortable homes with quality and affordability. Aset Kayamas' expanding portfolio covers luxury residential projects such as AXON Bukit Binang Parkhill in Bukit Jalil, The Forge in Sepang, The Holmes in Bandar Tun Razak and of course, Antara Genting Highlands. The company is also working on several affordable home projects across the Klang Valley in collaboration with local governmental bodies under the Perumahan Penjawat Awam (PPA) and 'Residensi Wilayah' schemes.

The strategic locations and accessibility of all Aset Kayamas projects are matched by its efforts to provide the best amenities and facilities within the developments – the very key aspects that have contributed to the continued success of its properties among investors and buyers.



Associate / Developer:  
ASET KAYAMAS SDN. BHD. Registration No: 201101001289 (929423-V)  
Lot 33545, Batu 5, Jalan Klang Lama, 58000 Kuala Lumpur  
T: +603-7989 9888 F: +603-7972 0888 E: info@asetkayamas.com

ANTARA @ GENTING HIGHLANDS · Developer's License No.: 13811-3/12-2023/0938(L) · Validity Period: 18/12/21-17/12/2023 · Expected of Completion: 17 JUNE 2026 · Approval Authority: Majlis Perbandaran Bentong · Building Plan Approval No.: MPBTG/JKB/GH/4/15/2020 · Sales Permit No.: 13811-3/12-2023/0938(P) · Validity Period: 18/12/21-17/12/2023 · Tenure of Land: Freehold · Restriction-in-Interest: NIL · Encumbrances: NIL · Type of Residential: Service Apartment · Total No. of Units: 1,086 units (Type A/AA - 520 sqft, Type AA-G1 - 674sqft, Type A-G2-789sqft, Type B1/B1A/B2/B3/B3A- 800sqft, Type B1-G/B1A-G-1,071sqft, Type B2-G-1,125sqft, Type B3A-G-1,079sqft, Type C1/C1A/C4 - 1,030sqft, Type C1-G1 -1,173sqft, Type C2-G2-1,170sqft, Type C3/C3A- 1,066sqft, Type C4-G- 1,425sqft, Type C5-1,040sqft, Type C5-G-1,349sqft) · No. of Unit: Block B: 356 units, Block C: 356 units, Block D: 374 units · No. of Storey: Block B: 44 storey, Block C:44 storey, Block D: 46 storey · Selling Price: Block B (min: RM 1,081,000 max : RM 2,147,000), Block C (min: RM 1,081,000 max : RM 2,098,000), Block D (min: RM 1,065,000 max : RM1,931,000) · Developed by : ASET KAYAMAS SDN BHD.  
THIS ADVERTISEMENT HAS BEEN APPROVED BY THE NATIONAL HOUSING DEPARTMENT

All information contained herein including the specifications, plans, measurements and illustration are subject to amendments without notification as maybe required by the authorities or the developer's consultants and are not intended to form and cannot form part of an offer or contract. All measurement are approximate. All pictures and illustrations are artist's impression only.